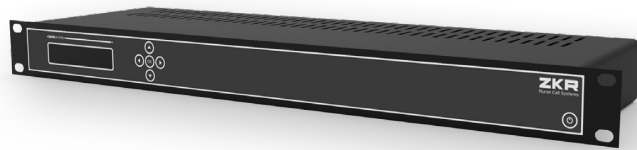


# ZKR Nurse Call System

## Application Server

### Application Server

The server controls the operation of the Comfort, Versatile Plus, Versatile, and Air Plus (optional) systems used in hospitals. The server provides log reporting through a web interface and enables integration with other systems used throughout the building. Our servers have a Linux-based robust and reliable infrastructure.



#### Application Server M30 - ZKRUNCIPSR10300

Software supporting up to 30 rooms

#### Application Server M50 - ZKRUNCIPSR10400

Software supporting up to 50 rooms

#### Application Server M150 - ZKRUNSRVSFTWAR5

Software supporting up to 150 rooms

- Linux Operating System
- Fully redundant structure
- Troubleshooting and error notification of all modules connected to the system
- Voice Record Module (for Comfort and Versatile Plus systems)
- Integration with WiFi mobile phones
- Integration with DECT telephones
- Integration with pagers
- Integration with PBX and ability to start emergency codes (such as 1111, 2222, 3333)
- IP, PRI, BRI, Analog Connection
- Integration with Fire Alarm Systems (Modbus, Bacnet, Special TCP connection types)
- Integration with CCTV Systems (Serial Port, Special TCP connection types)
- Integration with RFID Systems (Web service, Special TCP connection types)
- Integration with Hospital Information System
- Integration with Lighting Automation

*“All three of these servers share the same technical specifications below, and differ only in software license.”*

Form factor	1U rack server
Dimensions and weight	H: 42.8 mm (1.67 in), W: 434.0 mm (17.09 in), D: 144 mm (5.6 in) Max weight: 5 kg
Processor	1 processor from the following product families: <ul style="list-style-type: none"><li>• ARM base 1,8 Ghz Mali - T7640 MP4 GPU</li><li>• Quad-Core Cortex-A17</li><li>• OpenGL ES1.1 / 2.0 /3.0, openVG1.1, OpenCL and DirectX11</li></ul>
Operating system	Linux 64 bit Linux OS Debian base Kernel 4 UEFI Secure Boot
Memory	Memory type: Dual Channel LPDDR3 RAM 2GB
Storage	• 16GB eMMC & 64GB SSD
Audio	RTL ALC4040 CODEC supporting up to 24-bit/192kHz audio Hardware ready for audio jack plug detection
Network controller	Realtek RTL8211E-VB-CG Gigabit Ethernet
Wireless	802.11 b/g/n, Bluetooth V4.0 + EDR
Power	30W cabled PSU
Management	<ul style="list-style-type: none"><li>• ZKRUS SSH</li><li>• Web Based Management Tools</li><li>• Mini USB Consol</li></ul>
Input connection	4 x USB 2.0 Gigabit LAN HDMI 3.5 mm Sound Jack Mini USB (for management)
Graphic Processor	ARM Mali T760 MP4 - supports OpenGL ES1.1 / 2.0 /3.0, openVG1.1, OpenCL and DirectX11